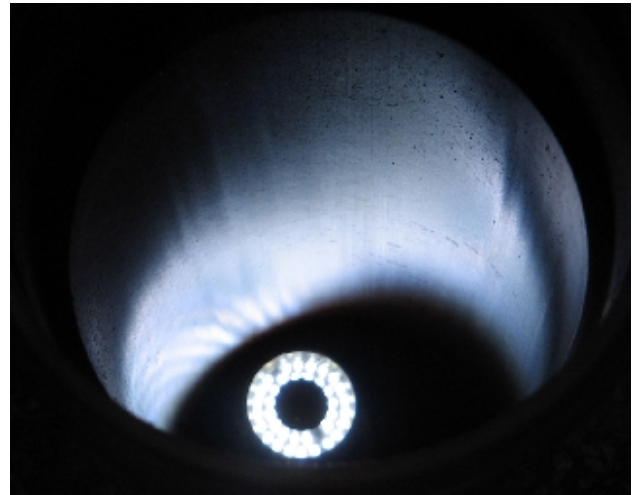


IKT Comparative Test

“Inspection systems for site drainage networks”



Inspection cameras throw light on dark places

This IKT Comparative Test clarifies how the various inspection systems for site drainage available on the market meet the demands placed on them and reveals specific strengths and weaknesses in each system. All the systems tested were found to be basically suitable for the inspection of site drainage networks.

Title

IKT Comparative Test “Inspection systems for site drainage networks”

Downloads

(German versions only)

Table of results

Test Report (98 pages)

Short report (14 pages)

Clients



Cameras for sewer laterals must have flexing capability

- City of Alsdorf municipal waste-water management utility
- City of Bergisch Gladbach waste-water utility
- City of Dinslaken
- Düsseldorf urban drainage utility
- City of Gladbeck
- Göttingen urban drainage utility
- City of Hilden
- Cologne urban drainage utilities
- City of Neuss
- Niederrheinische Versorgung und Verkehr AG (NVV; Lower Rhine regional supply/disposal and transport utility)
- Stadtwerke Quickborn (municipal utility)
- City of Recklinghausen
- Warendorf disposal utility
- Würzburg state civil-engineering department

with funding from the Ministry for the Environment, Agriculture, Nature Conservation and Consumer Protection of the German Federal State of North Rhine-Westphalia

Contact

Serdar Ulutaş

Dipl.-Ing. (FH), MBA

T: +49 (0) 209 17806-32

E: ulutas@ikt.de